

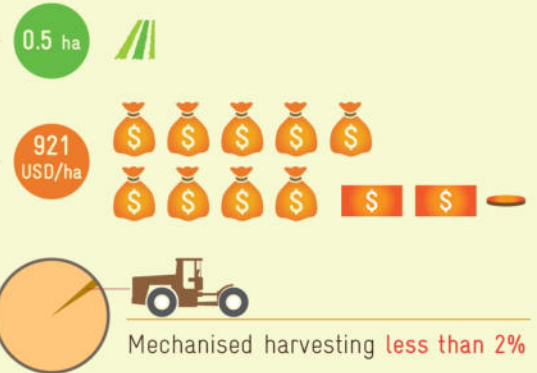
Rice Farmers in BRIA INDONESIA



BRIA Indonesia aims to improve the livelihood of rice farmers through the promotion of sustainable increase in productivity, climate change adaptation, rice fortification, youth participation in rice farming, and facilitated market linkages for smallholder rice farmers. A baseline study was conducted by interviewing 600 farmers from 3 locations in 2 provinces of North Sumatra and East Java.



Through capacity building, training and outreach activities, BRIA aims to reach **7,500 out of around 14,000,000*** rice farmers in Indonesia



Farm Size per Household (ha)

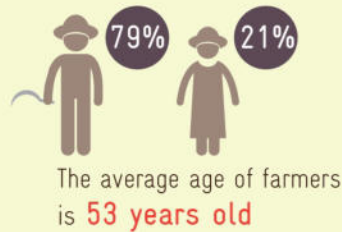
1 ha

Net Income (USD/ha)

100 USD 10 USD 1 USD

Grain Yield (kg/ha)

1,000 kg



Planting Technique: 100% transplanting

